


---

---

---

---

---

---

---

---

---

---




---

---

---

---

---

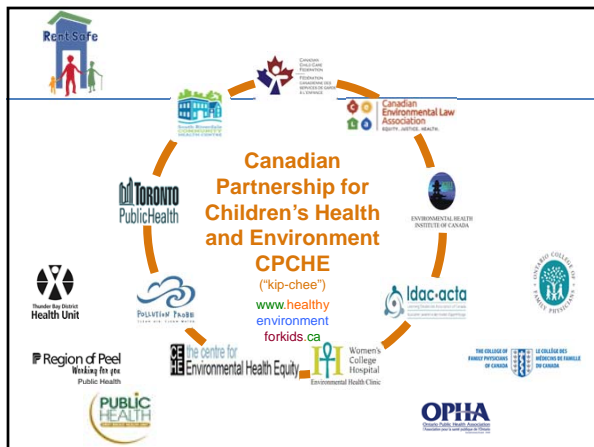
---

---

---

---

---




---

---

---

---

---

---

---

---

---

---

 *What is RentSafe?*

- RentSafe is a 3-year initiative that seeks to build collaboration across multiple sectors to ensure healthy housing conditions for tenants living on low income in urban and rural communities in Ontario
- Health equity and social justice as key drivers
- Led by CPCHE, funded by the ON Trillium Foundation, multiple active partners




4

---

---

---

---

---

---

---

---

---

---

 *RentSafe Overview*

**Phase 1**  
Baseline research

- Tenant focus groups
- Public Health Unit survey
- Legal aid clinic survey and case law review
- Front-line /direct service providers survey

**Phase 2**  
Stakeholder engagement & strategy development

- Baseline Report
- Multi-stakeholder Roundtable
- Collaborative path forward

**Phase 3**  
Capacity building & outreach

- Tenant-led outreach, materials development
- Capacity building for health/social services professionals (training video)

5

---

---

---

---

---


---

---

---

---

---

 *Home as a determinant of health*

- Preconception, prenatal and early life exposures to contaminants in the home can negatively affect health and well-being
- Non-chemical “exposures” also important (home as source of stress and/or security)
- Individual actions (e.g., bust that dust) can help but are limited
- Socio-structural issues (e.g., poverty, racism, uneven capacity to exercise rights, colonial legacies) can be potent contributors to housing-related inequities

6

---

---

---

---

---


---

---

---

---

---

 **Housing-related health risks**

- **Mould, dampness** – asthma, respiratory symptoms
- **Lead** – reduced IQ, attention and behavioural effects
- **Pests** – physical discomfort (e.g., bites), stress, infectious disease and allergens
- **Pesticides** – neurological/developmental effects, poisonings, cancer risk
- **Radon** – lung cancer
- **VOCs in reno and cleaning products** – acute symptoms (e.g., eye irritation, headaches); exacerbation of asthma, multiple chemical sensitivities (MCS)
- **Insufficient heating/cooling** – increased infectious disease, heat exhaustion/stroke, exacerbation of existing health conditions

For more info, see: *RentSafe Background Paper on Housing-Related Health Risks*  
<http://www.healthyenvironmentforkids.ca/resources/rentsafe-background-paper-housing-related-health-risks> 7

---

---

---

---

---

---

---

---

 **Strengthening the Circle of Care**



---

---

---

---

---

---

---

---

 **GROUP EXERCISE**

---

---

---


---

---

---

---

---

 *RentSafe learnings to date*

- RentSafe sectoral surveys (public health units, legal aid clinics, frontline workers) reveal gaps and disconnects in the intersectoral “system”
- Legal provisions (HPPA, RTA) are siloed; tenants face multiple barriers in accessing justice
- Landlords (esp. small-scale) also face challenges
- Tenants experience compounding effects of poverty, unfit housing conditions and difficulties in accessing support

---

---

---


---

---

---

---

---

 *“Home”*  
*RentSafe video reflecting tenants’ experiences of unhealthy housing*



Available on YouTube CPCHVideos channel at:  
<https://www.youtube.com/watch?v=jp7pKl9psSM>

---

---

---


---

---

---

---

---

 *Open discussion*

- Do you see these issues coming up in your work with expectant parents / families?
- What possibilities do you see for better supporting tenants’ right to healthy housing?
- What are your suggestions for helping to build awareness and capacity among professionals on these issues?
- Other thoughts? Ideas?

---

---

---


---

---

---

---

---



*For more information*

- Visit the RentSafe project page:
  - sign up for project updates
  - access RentSafe publications, including
    - survey reports
    - Roundtable discussion paper
    - project overview
    - backgrounder on housing-related health risks
  - [www.healthyenvironmentforkids.ca/collections/rentsafe](http://www.healthyenvironmentforkids.ca/collections/rentsafe)
- Contact Erica Phipps, CPCHE ED and RentSafe Coordinator: [erica@healthyenvironmentforkids.ca](mailto:erica@healthyenvironmentforkids.ca)

13

---

---

---

---

---

---

---

---



*Acknowledgements*

- RentSafe Project Team
 

Kathy Cooper, CELA	Jill McDowell, TPH
Karen Croker, GBHU <sup>1</sup>	Amanda McManaman, GBHU
Samantha Davidson, The Table CFC <sup>2</sup>	Erica Phipps, CPCHE/CEHE
Helen Doyle, York Region PH / OPHA	Beth Schilling, The Table CFC
Bob Hart, GBHU	Olanna White, TPH
Lynn Marshall, EHI-Canada	Caryn Thompson, SRCHC
Jeff Masuda, CEHE	Vittoria Vecchiarelli, York Region PH

*<sup>1</sup> Past member of RentSafe Project Team*
- Ontario Trillium Foundation
- RentSafe Advisory Committee
- RentSafe consultants: Deborah Schoen, Lindsay McDermid, Tapinder Singh Flora
- CEHE/Queen's research assistants: Rachel Hayton, Carlos Sanchez-Pimienta, Randi Wang
- Best Start / Health Nexus

14

---

---

---

---

---

---

---

---