

A photograph of two young children sitting on a table, engaged in painting. The child on the left is wearing denim overalls and has paint on their hands and face. The child on the right is wearing a white t-shirt and has paint on their face and hands. They are surrounded by paint containers and a messy table covered in paint splatters. The image is overlaid with a diagonal split: orange on the left and blue on the right.

# TRENDS IN ECE ACROSS CANADA

FEBRUARY 26, 2015

**Best Start Resource Centre Conference 2015**

Zeenat Janmohamed

Atkinson Centre for Society and Child Development,  
OISE, University of Toronto

REVERSING THE REAL BRAIN DRAIN

# Early Years Study

Final Report

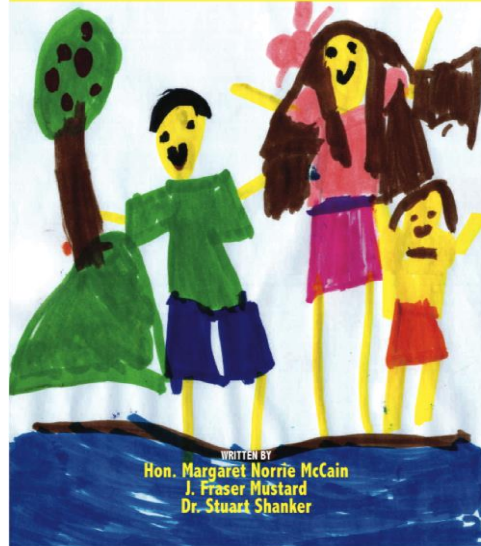


April 1999

Co-edited by Hon. Margaret Norrie McCain & J. Fraser Mustard

## EARLY YEARS STUDY 2

Putting Science into Action



WRITTEN BY  
Hon. Margaret Norrie McCain  
J. Fraser Mustard  
Dr. Stuart Shanker

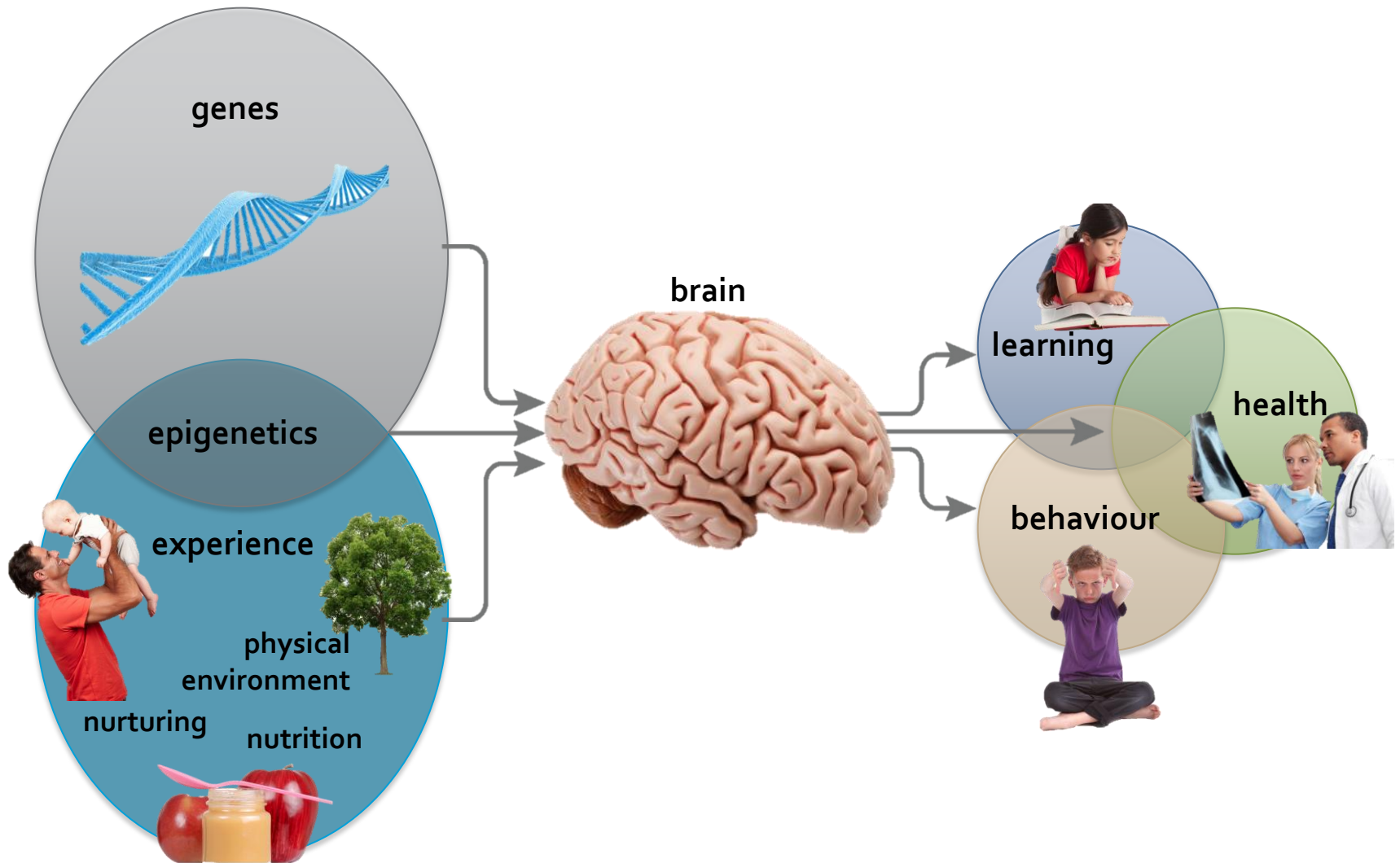
## Early Years Study 3

Making decisions  
Taking action

HON. MARGARET NORRIE MCCAIN  
J. FRASER MUSTARD  
KERRY MCCUAIG

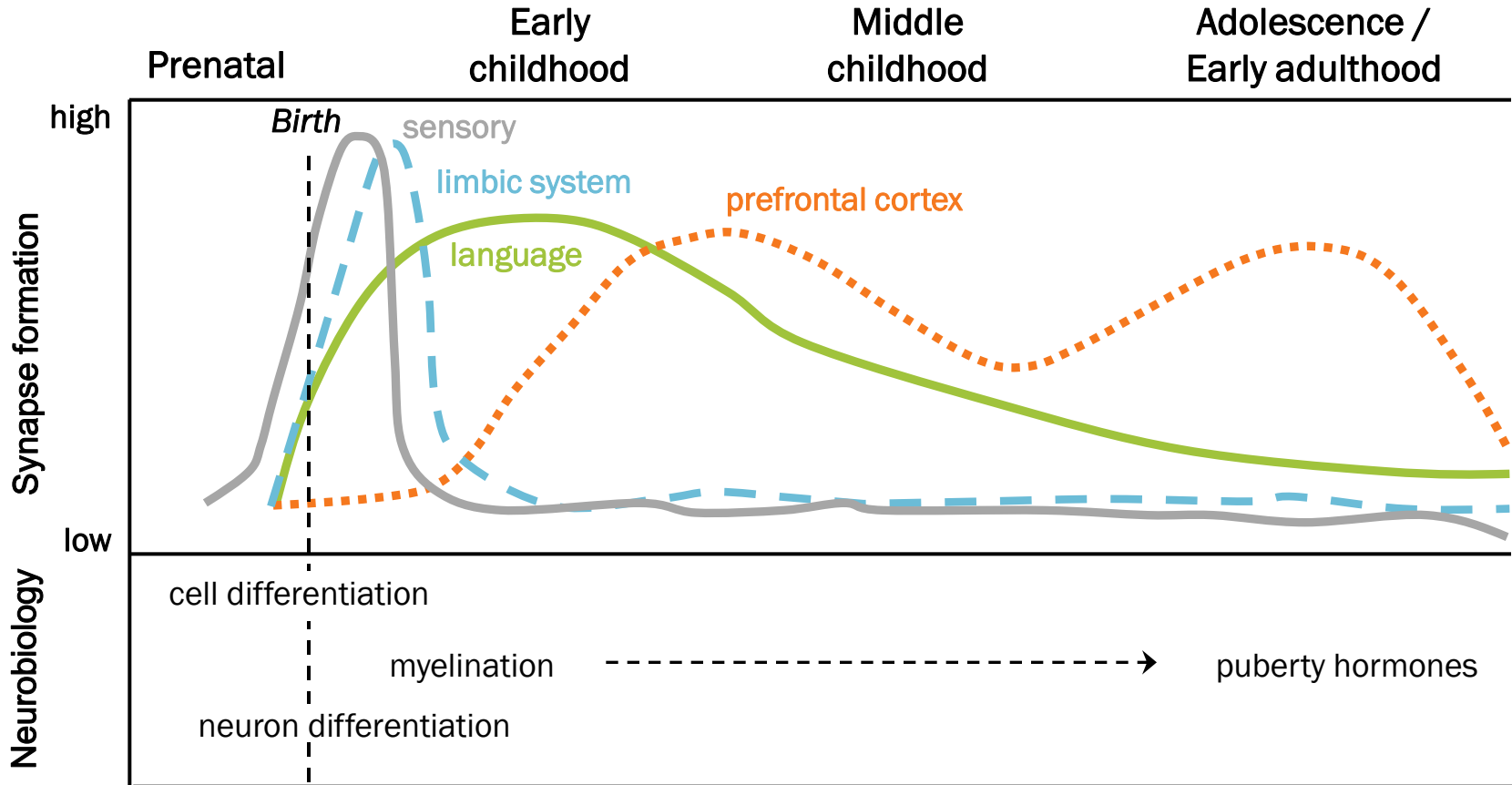
# The scientific, social and economic rationale for ECE

# Experienced-based brain development

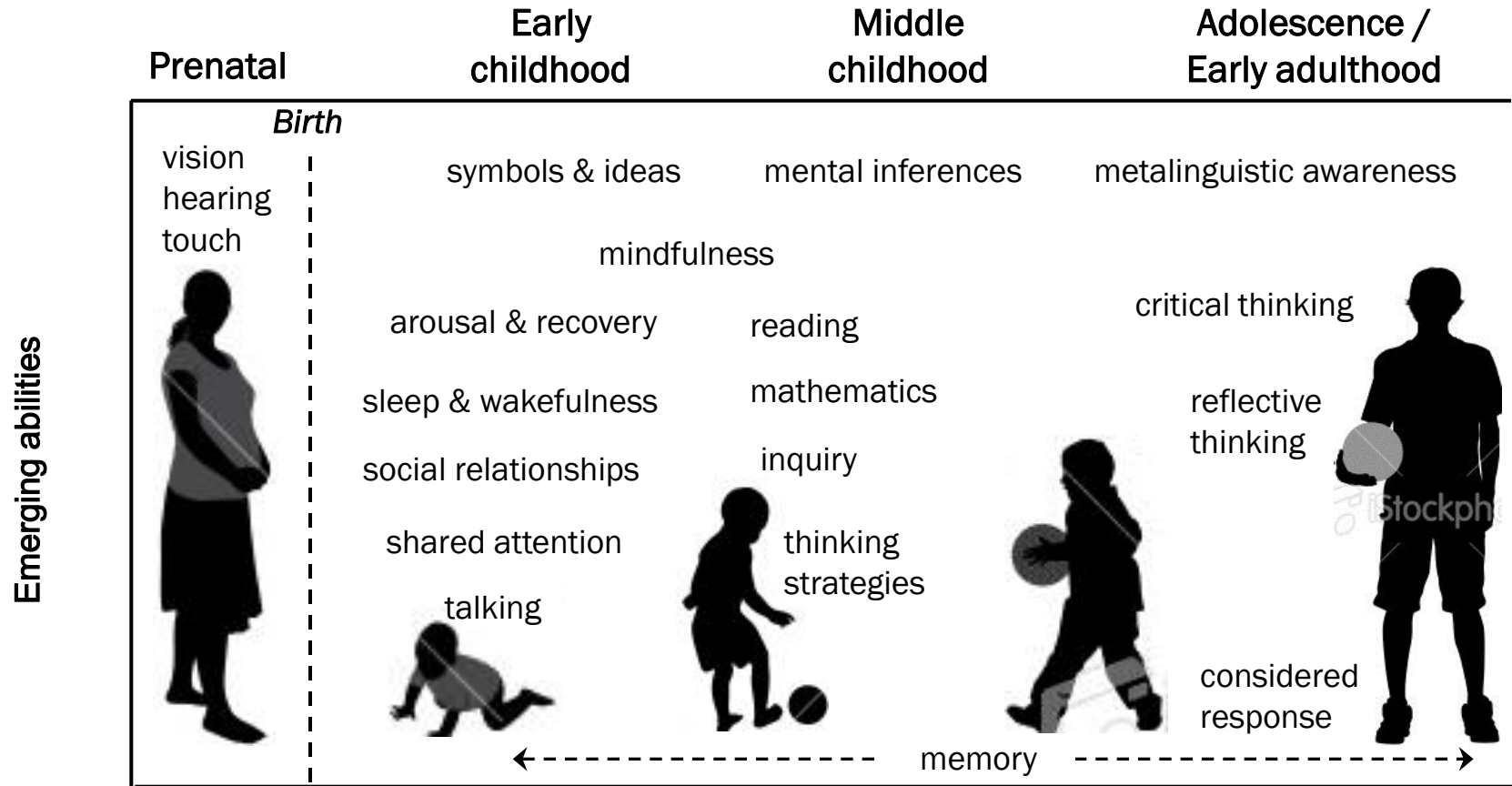


Adapted from: Fields, D. (2011); Kandel, E., Schwartz, J. & Jessell, T. (2000); McCain, M., Mustard, J.F. & Shanker, S. (2007).

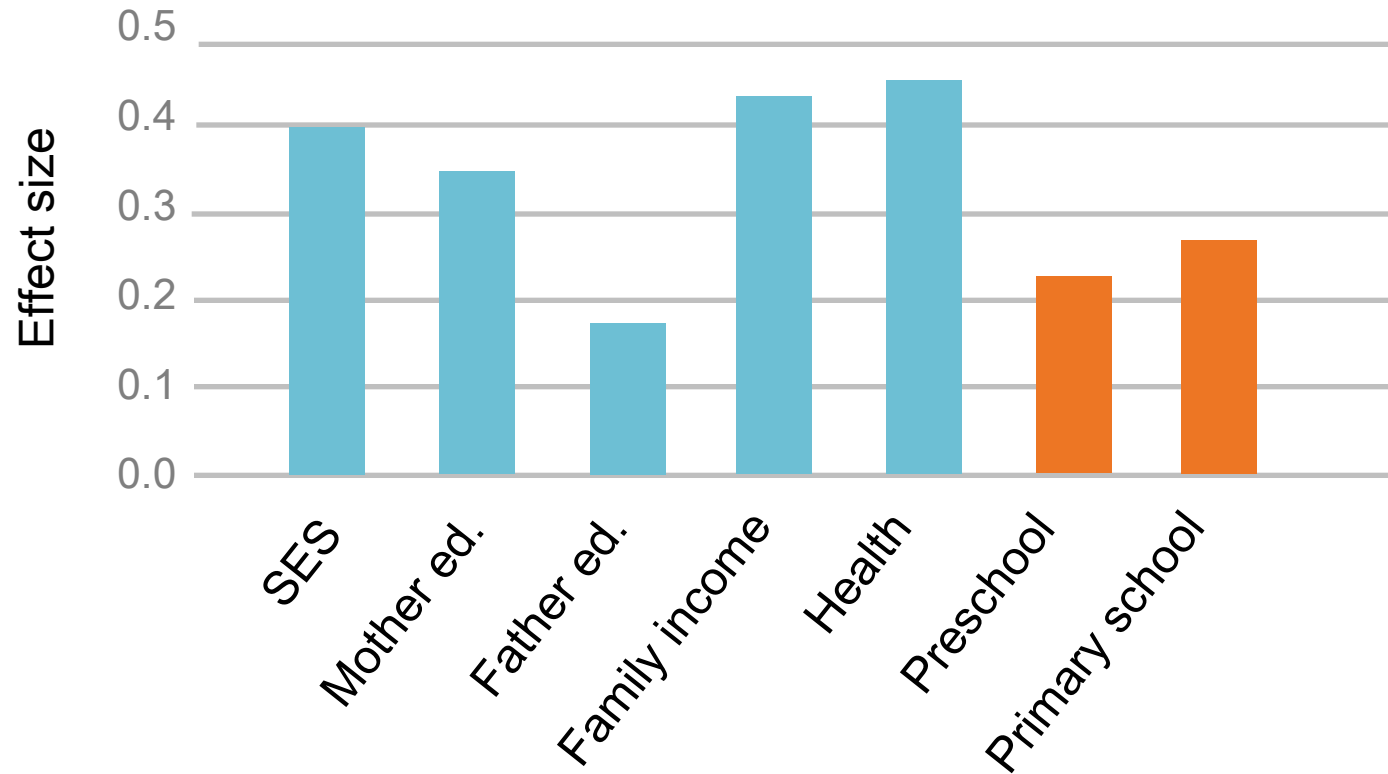
# NEURAL PATHWAYS UNDER CONSTRUCTION



# NEURAL PATHWAYS UNDER CONSTRUCTION



# FACTORS AFFECTING ACHIEVEMENT AGE 11



Source: Melhuish, E. in Roseveare, D. (2011).

# DONE RIGHT EARLY EDUCATION PAYS FOR ITSELF

	Year	Premise	Benefits	Ratio
<p>Economic Consequences of Quebec's Educational Childcare Policy</p> <p>Pierre Fortin Luc Godbout Suzie St-Cerny</p>	2011	<p>Increased women's employment by 70,000</p> <p>Enhanced maternal employment pays for the program</p>	<p>Quebec gains \$1.5 B in increased tax revenue</p> <p>Pays \$340 M less in tax and social benefits to families</p> <p>Increased GDP by \$5.2 B</p>	<p>For every \$1 spent on ECEC, Quebec receives \$1.05</p> <p>Federal government receives \$.44</p>
<p>Better Beginnings Better Future</p> <p>Queen's University</p>	2010	<p>\$580,000 per community site for 5 years</p> <p>3 sites involving children 4-8 years 5 sites involving children birth to 4 years</p> <p>Matched similar neighbourhoods</p>	<p>No difference for BBBF sites focused on birth to 4 years but reduced use of health, special education, child welfare in 4-8 years sites compared to matched neighbourhoods</p>	<p>For every \$1 spent in school-based programs, \$2 saved in reduced costs to public and community agencies</p>



# WHAT HAS LOW COST EARLY EDUCATION AND CARE DONE FOR QUÉBEC?

**70,000 more mothers are working**

**They generate \$1.5-billion annually in taxes**

**And draw \$340-million less in social transfers**

**Boosting the GDP by \$5-billion**

Source: Fortin, P., Godbout, L., & St-Cerny. (2012).

# QUÉBEC MOTHERS HAVE:

**Moved Québec from the bottom to the top in female labour force participation in Canada**

**Halved child poverty rates**

**Halved social assistance rates for lone parents**

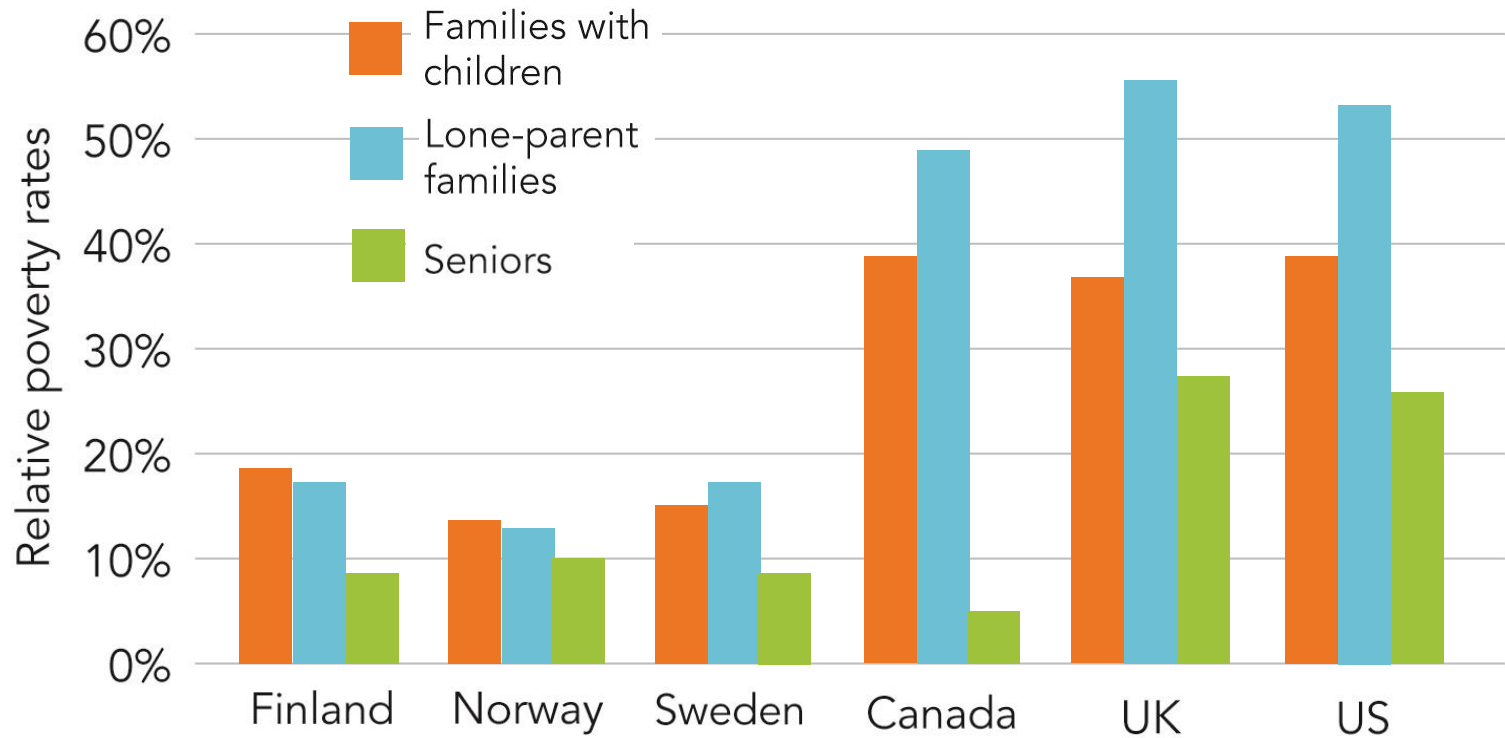
**Boosted fertility**

**Meanwhile, Québec student test scores have moved from below to above the national average**

# **DONE RIGHT EARLY EDUCATION PAYS FOR ITSELF**

*For every dollar Québec spends on ECE, it collects \$1.05 in increased taxes and reduced family payments, while the federal government gets \$0.55*

# Relative poverty rates for three social risk categories



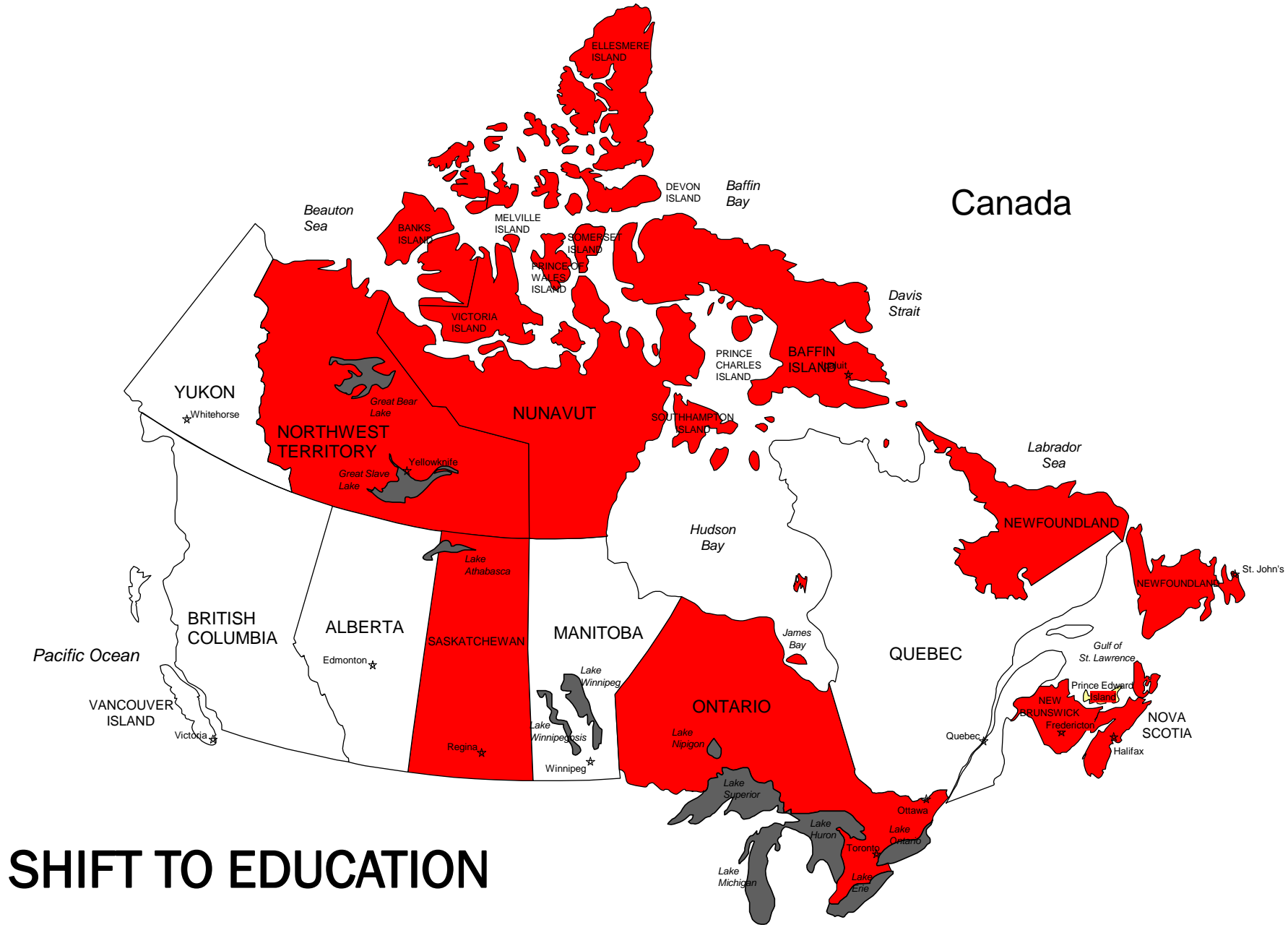
Source: Commission on Social Determinants of Health. (2008). p. 85.

# Early Childhood Education Report 2014: It's time for preschool

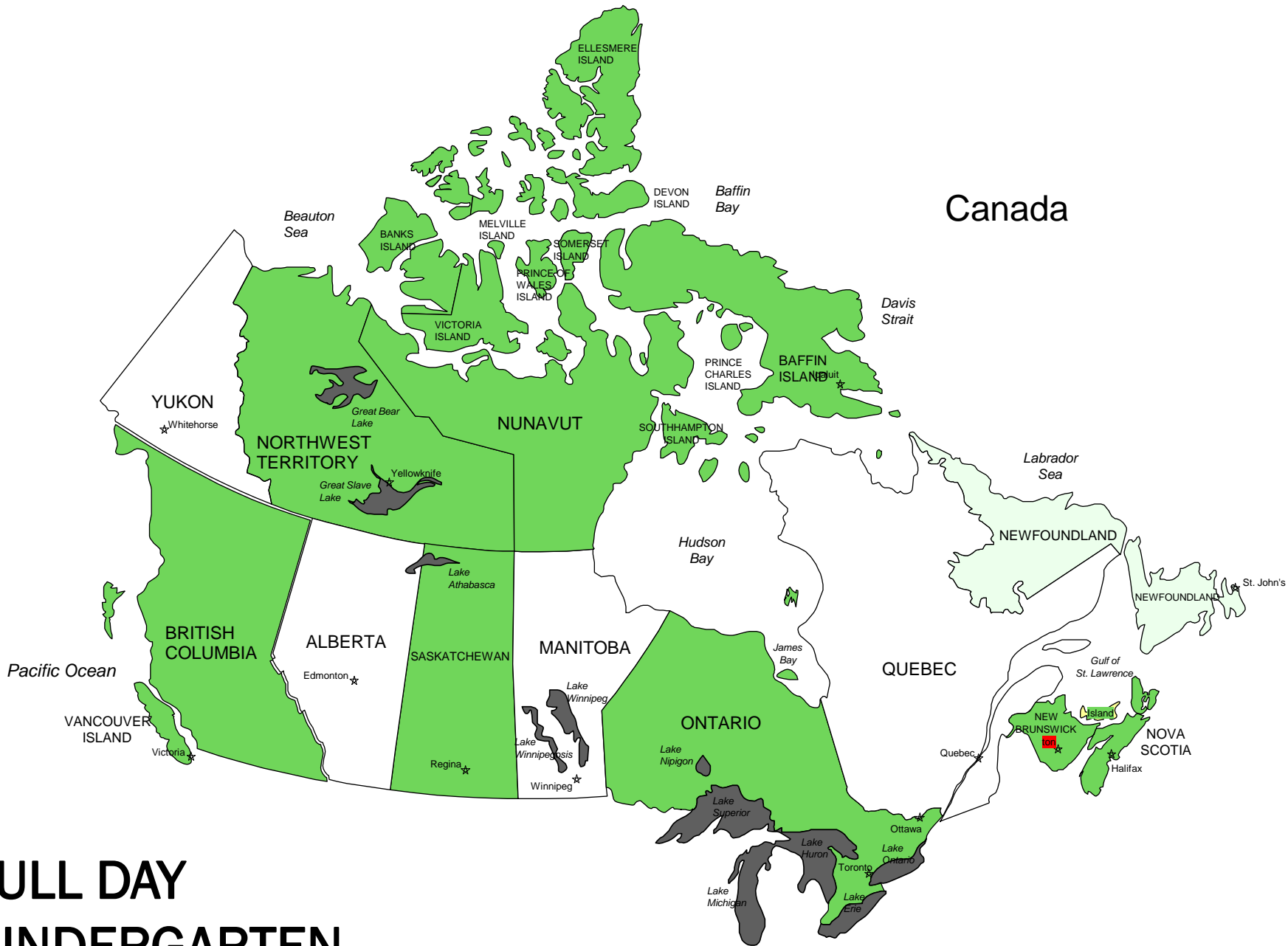


# Early Childhood Education Report 2014

Getting it right  
from the start



**SHIFT TO EDUCATION**

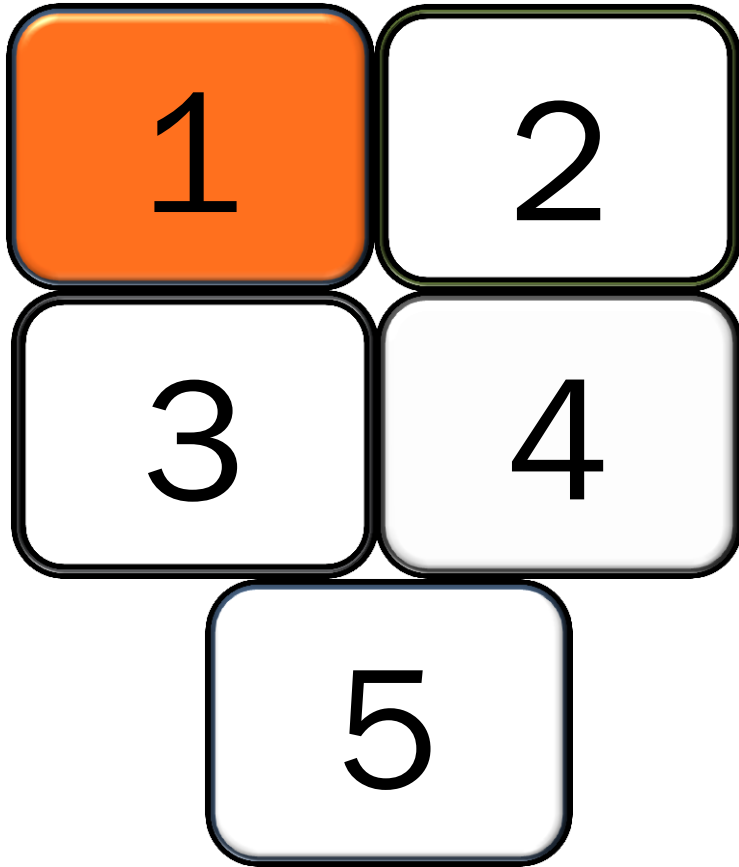


# FULL DAY KINDERGARTEN



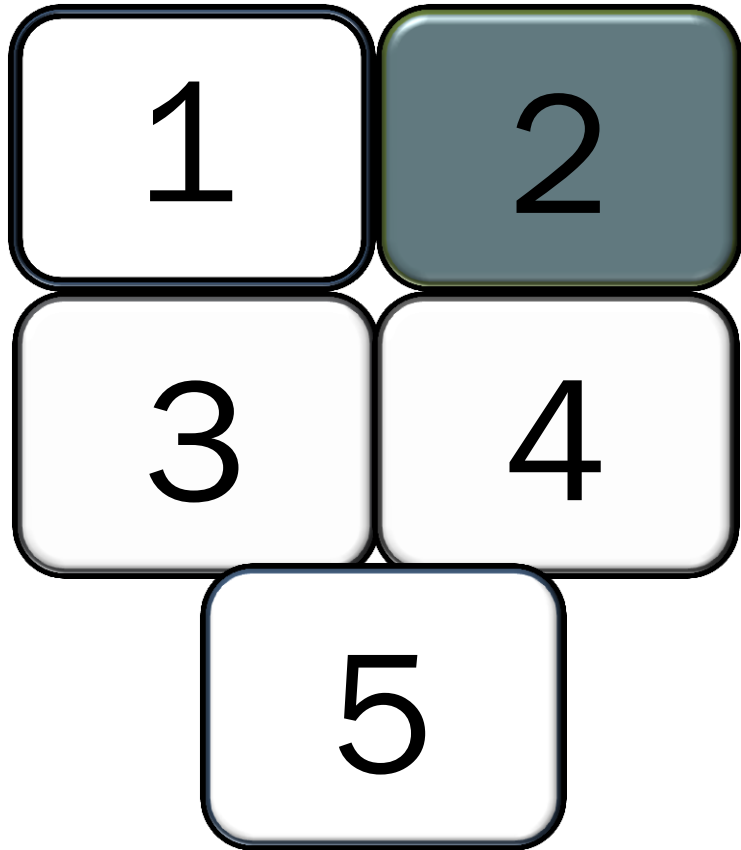


# EARLY LEARNING CURRICULUM FRAMEWORKS



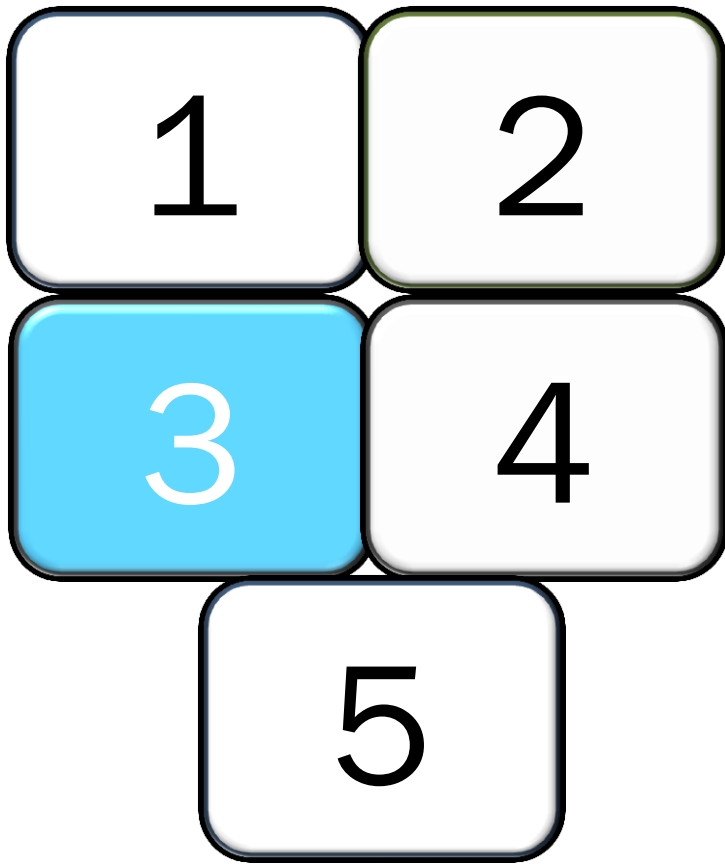
Wages improving  
Increased post-secondary  
qualifications  
Distinction between ECEs  
and assistants  
Increased unionization

# The ECE workforce



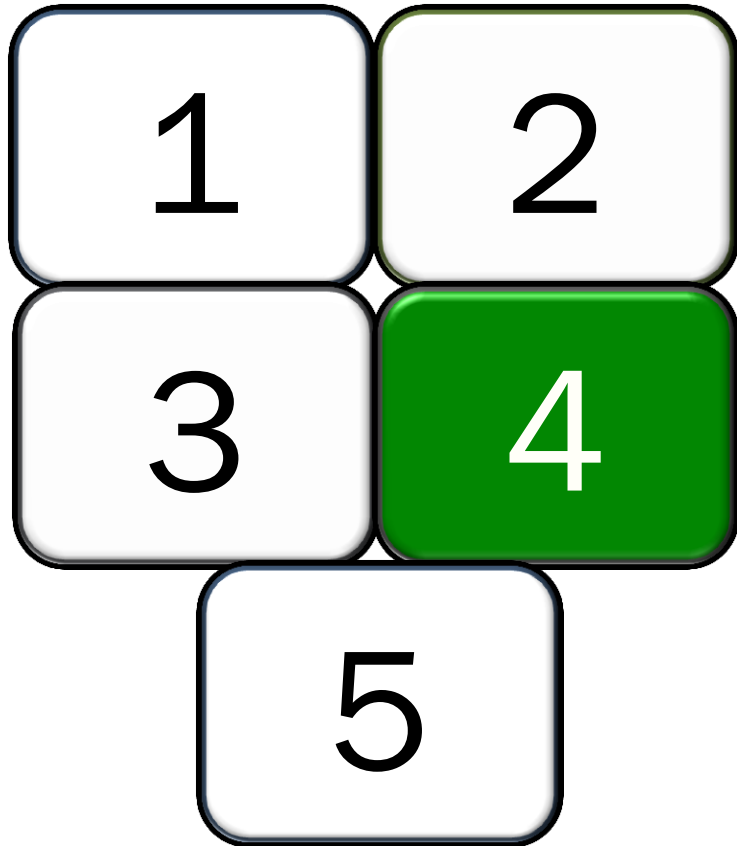
With exception of Nunavut,  
there is at least one quality  
measurement tool in use in  
every P/T

Accountability through  
program monitoring



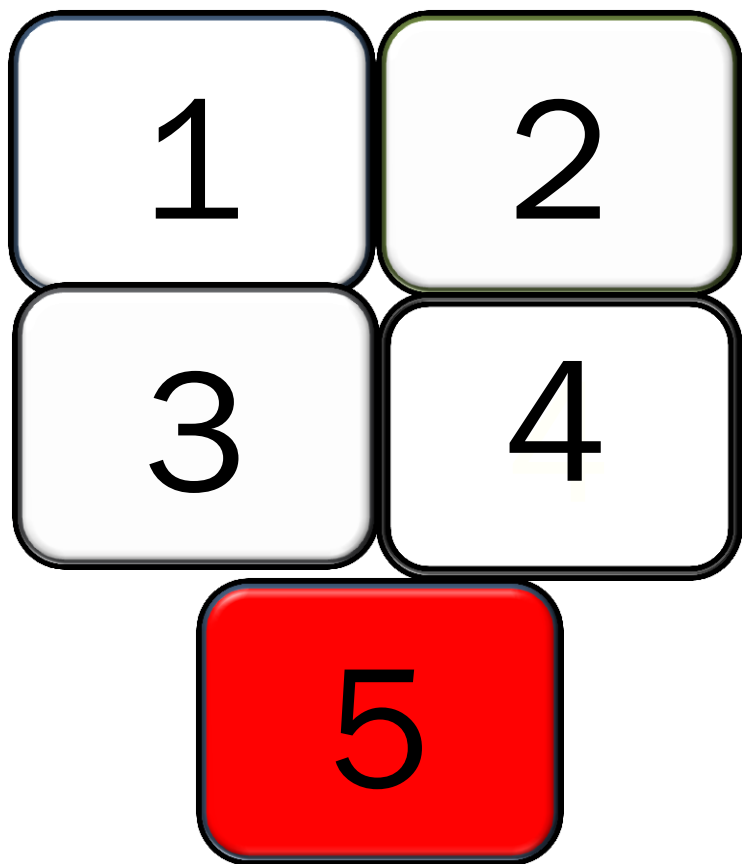
Eight P/Ts require ECES to be certified or registered.

Increased definition of ECE  
scope of practice



Increased undergraduate and graduate post-secondary opportunities in ECE

ECE policy and practice research in Canada

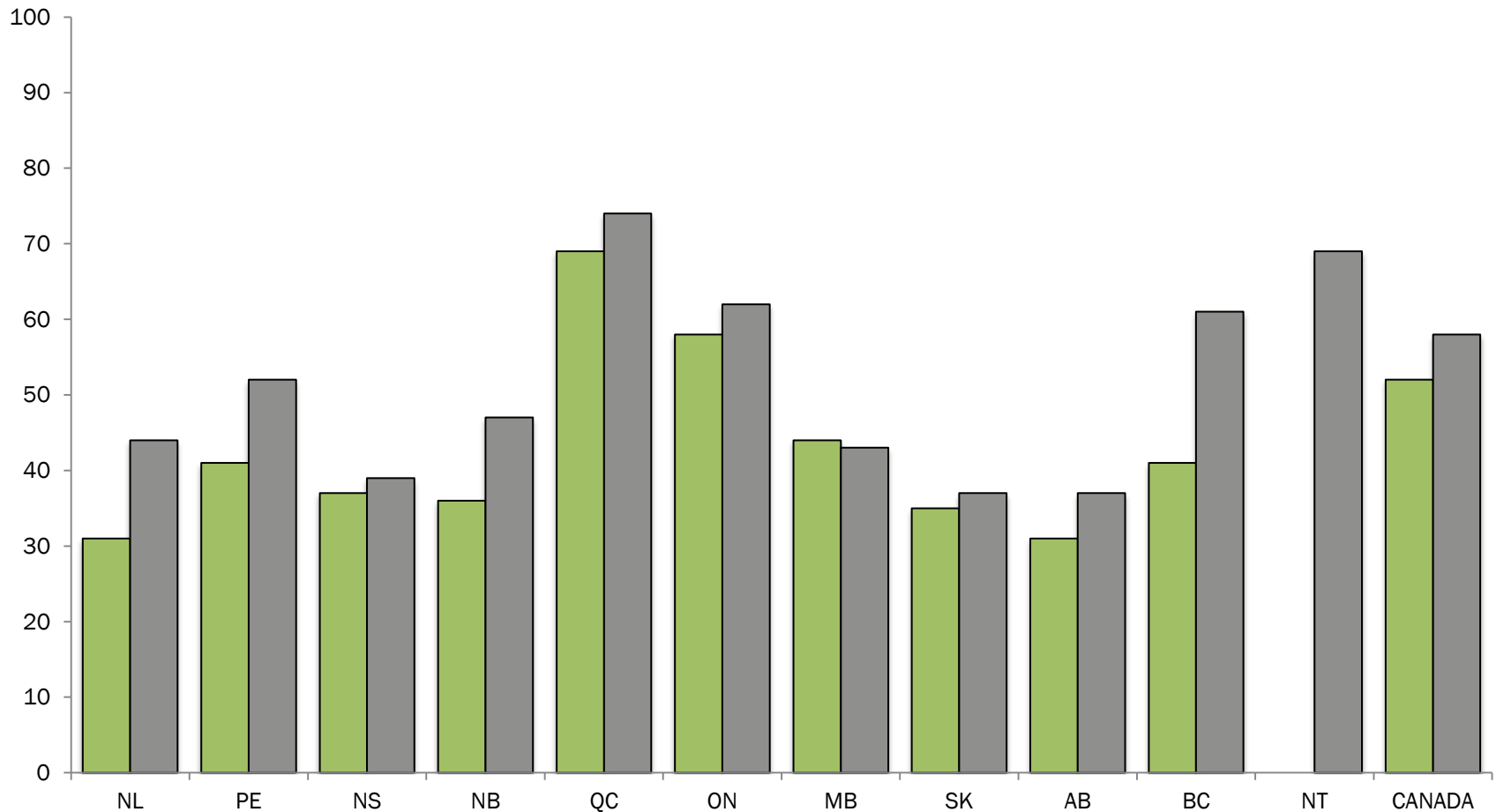


ECEs challenged to make significant changes

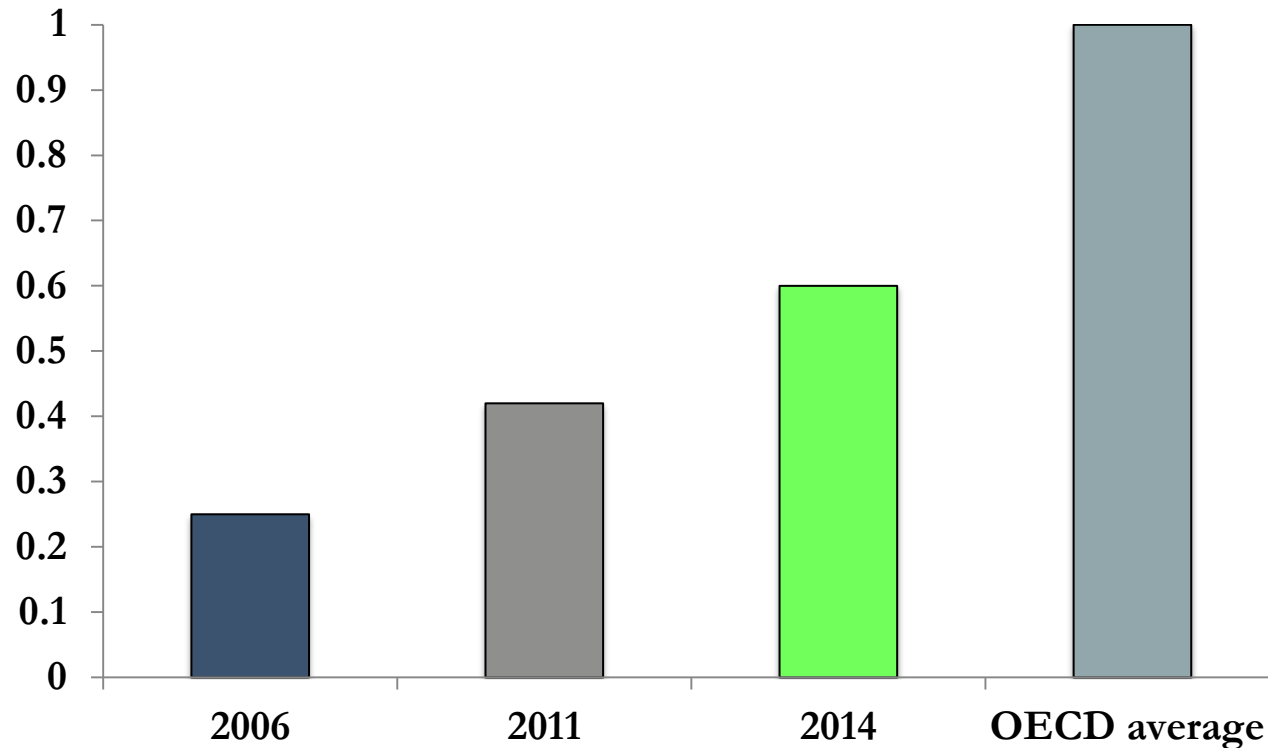
College ECE programs challenged to shift curriculum content to prepare ECEs for a changing landscape

Moving from cottage industry to a system

# PERCENT CHANGE IN ECE ATTENDANCE BY CHILDREN 2 TO 4 YEARS OLD



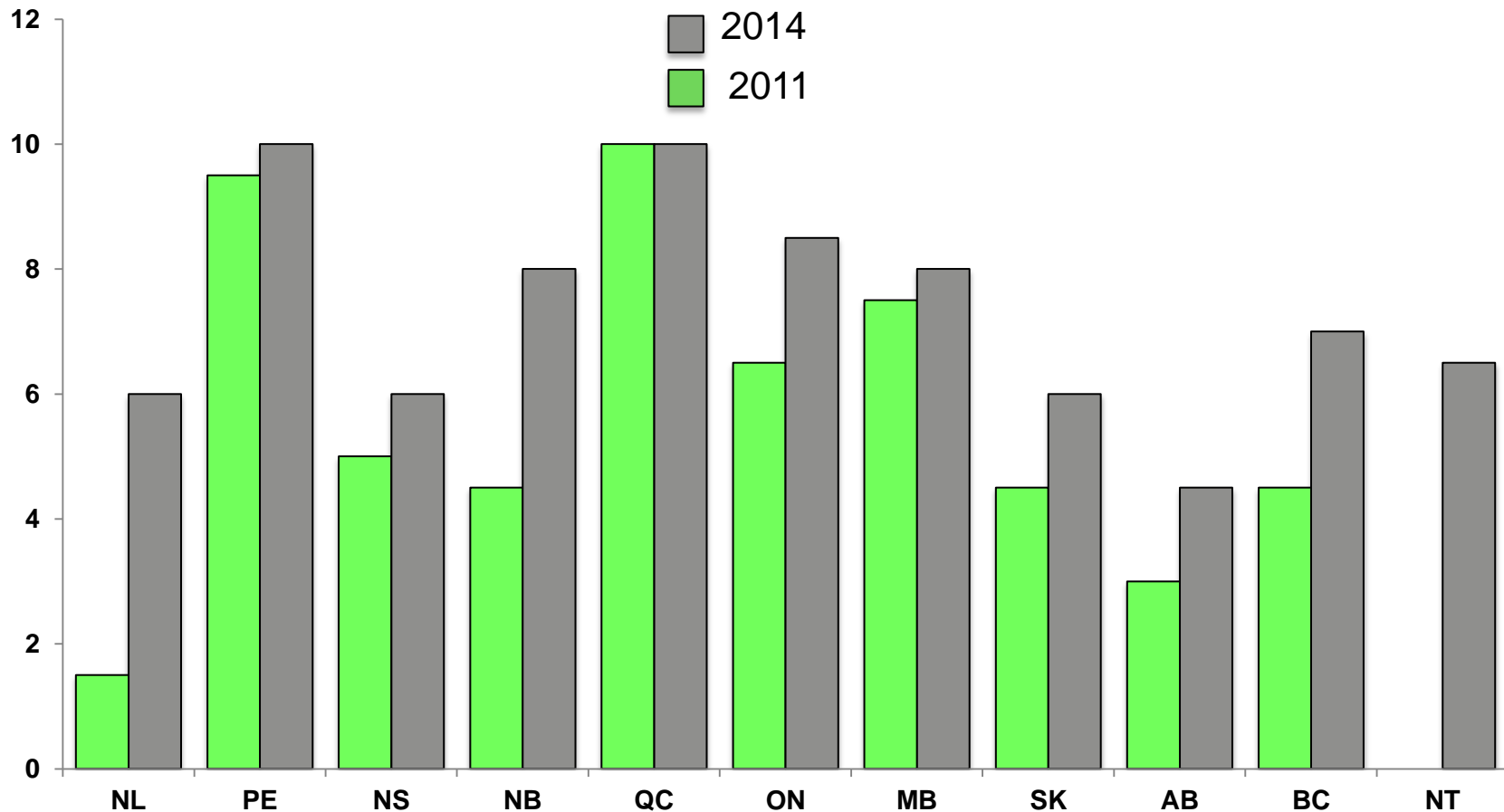
# CHANGE IN CANADA ECE SPENDING AS A PERCENTAGE OF THE GDP





# MORE ATTENTION TO EARLY CHILDHOOD EDUCATION

Change in ECE Report Results

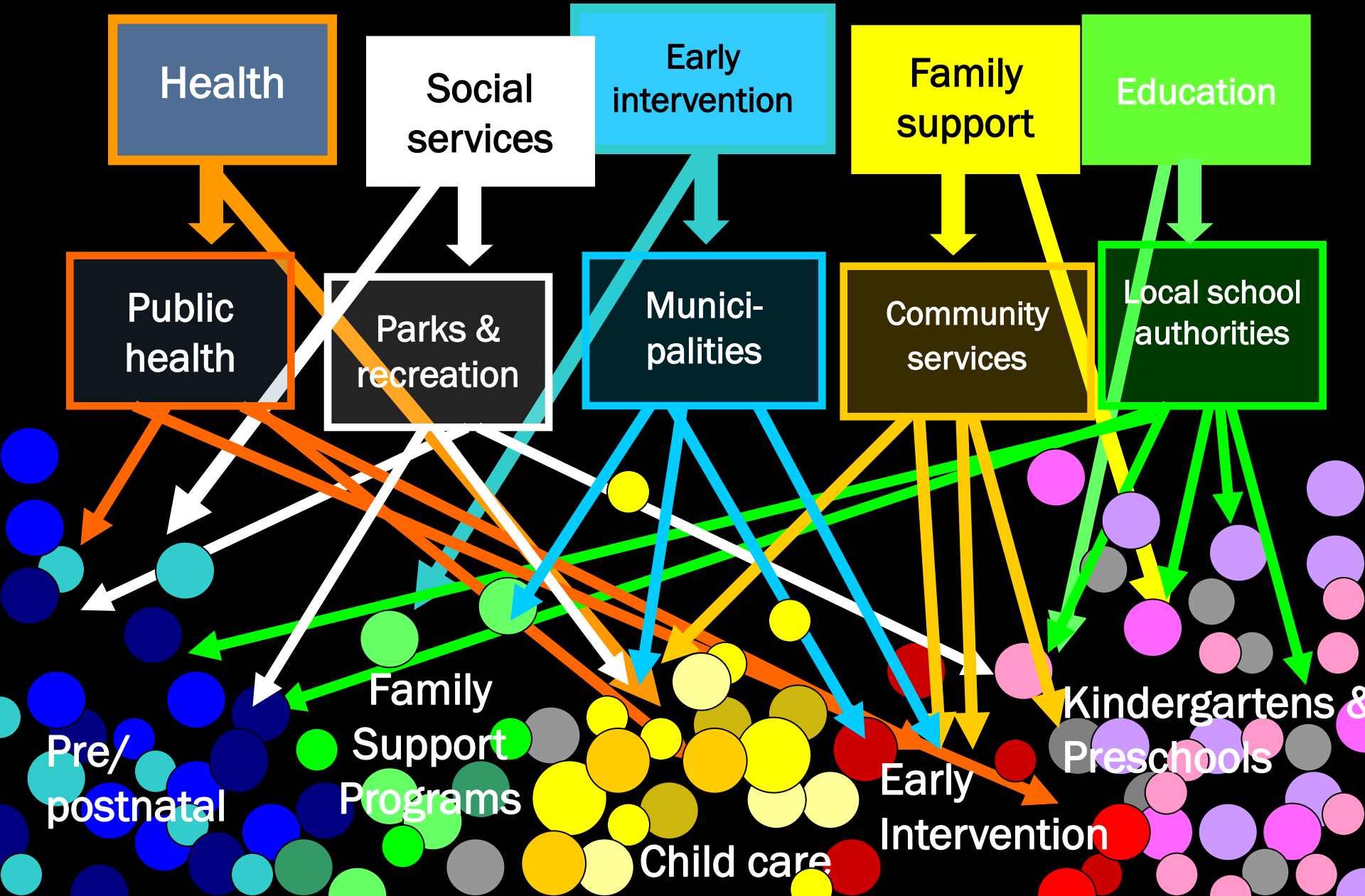


# Joining up family resources, & maternal, newborn and child health with early childhood education?

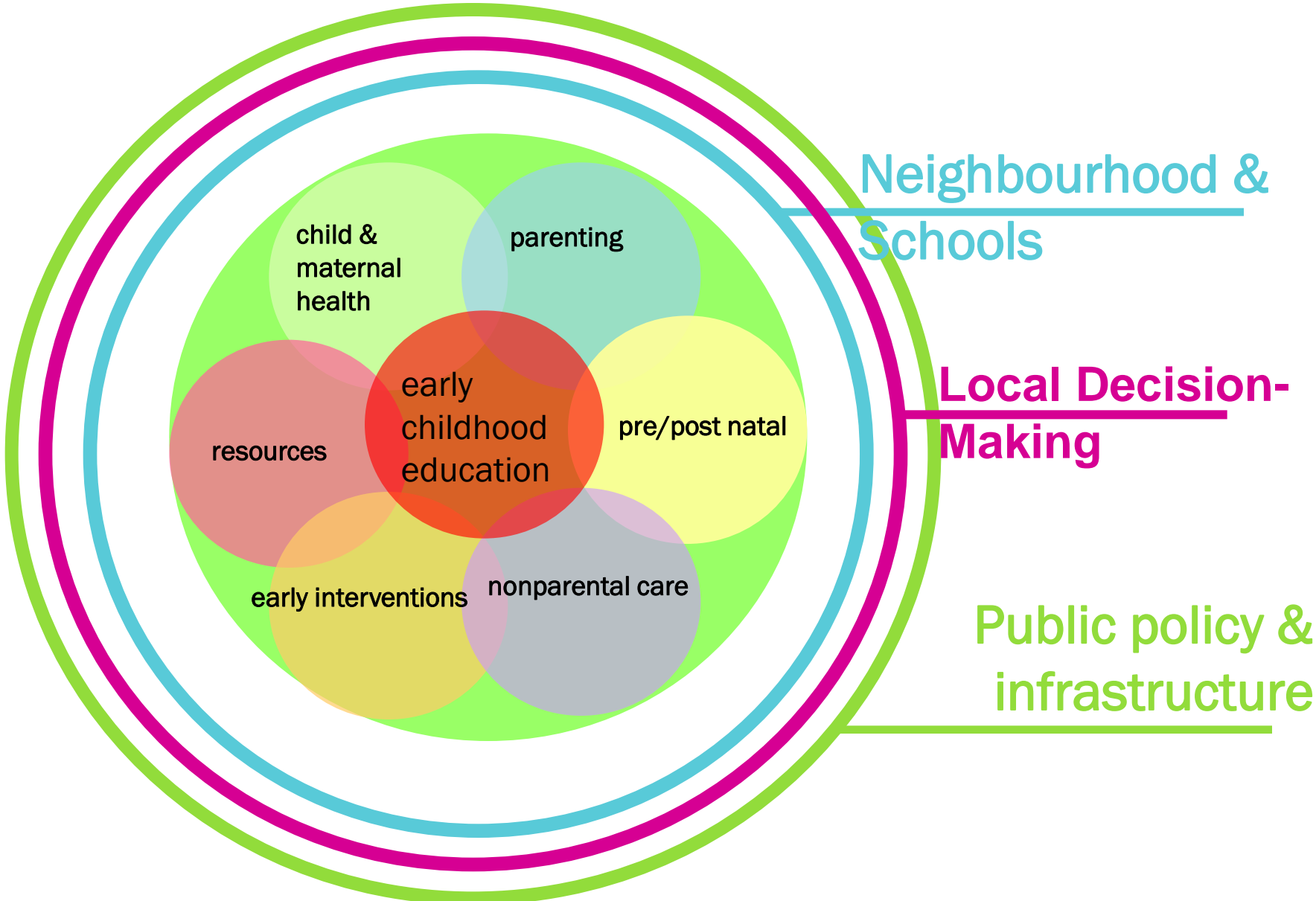
# THE EARLY EDUCATION CHALLENGE

Research indicates integrated delivery of early childhood and family support programs from a stable platform serves more families, more cost-effectively and in ways that families want to be served.

# Chaos



# INTEGRATED CHILD & FAMILY CENTRE



Neighbourhood & Schools

Local Decision-Making

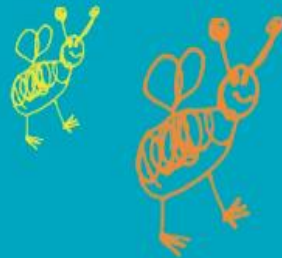
Public policy & infrastructure

With **Our Best Future** in Mind  
Implementing Early Learning in Ontario



# Plan for Child & Family Centres

In spring we play baseball. In spring we see blue flowers.  
In spring we fly a kite. In spring we do spring dance.  
In spring we have fun. In spring we see blue flowers.  
In spring we play baseball. In spring we see blue flowers.  
In spring we play soccer. In spring we do spring dance.  
In spring we fly a kite. In spring we have fun.



Report to the Premier by the  
Special Advisor on Early Learning  
Charles E. Pascal

**Atkinson Centre**  
for Society and Child Development

# A PAN-CANADIAN MONITORING OF FAMILY RESOURCE/EARLY INTERVENTION/FAMILY HEALTH?

A sister monitoring tool  
to the ECE Report

Benchmarks based in  
evidence

Data publicly available  
across Canada

A credible, non-  
government host

# REFERENCES

Akbari, E. & McCuaig, K., (2014) Early Childhood Education Report 2014.  
Atkinson Centre, University of Toronto

McCain, M., Mustard, F. & McCuaig, K. (2011) Early Years Study 3. Toronto, ON:  
Margaret & Wallace McCain Family Foundation  
[www.earlyyearsstudy.ca](http://www.earlyyearsstudy.ca)

Atkinson Centre [online] Policy Monitor: Early Child Program and Policy Update.  
[www.oise.utoronto.ca/atkinson/Resources/Policy\\_Monitor/index.html](http://www.oise.utoronto.ca/atkinson/Resources/Policy_Monitor/index.html)





Margaret & Wallace McCain  
Family Foundation

**ATKINSON**  
**FOUNDATION**



# ADDITIONAL RESOURCES

**Early Childhood Education Report 2014:**  
[www.timeforpreschool.ca](http://www.timeforpreschool.ca)

**Atkinson Centre:**  
[www.oise.utoronto.ca/atkinson](http://www.oise.utoronto.ca/atkinson)

**Contact:**  
[zeenat.janmohamed@utoronto.ca](mailto:zeenat.janmohamed@utoronto.ca)



**Atkinson Centre**  
for Society and Child Development